



ASHP

PowerTone Amplified Speaker

CPG Signals
 2519 4th Avenue, Moline, Illinois 61265
 P.O. Box 590, Moline, Illinois 61266-0590
 Phone: (800) 577-5758 Local: (309) 762-0731 Fax: (309) 762-8215
 Internet: www.cpgsignals.com

MEA



ISO 9001 Certified Management System

Description

CPG Signals Model ASHP PowerTone® Amplified Speaker produces a crisp, clear, high-decibel tone. The tone may be generated by the PowerTone® Signaling System by a compact, solid-state, plug-in card. The speaker cone and projector are of spun aluminum. The circuitry and tone card are contained in dust and moisture proof sealed housing of die-cast aluminum. An internal gain control allows for volume adjustment. The amplified speaker is NEMA 3 rated, and is finished in red enamel. Model ASHP Amplified Speakers operate at 24 VDC and are polarized for connection to system supervised alarm notification circuits. The ASHP is also available in a 120 VAC model. CPG model V1971 synchronized strobe lights are available as an option when visual signaling is required. Strobes can be synchronized using Model VSYNC sync module. Both the speaker and strobe are listed for indoor and outdoor use.

Application

The PowerTone® Amplified Speaker is well suited for signaling in hazardous areas with high ambient noise levels and where a unique audible signal is required. When used with the PowerTone® Signaling System and PTCK25 connector card, the speaker can produce multiple tones for various signal requirements. For single tone applications the PowerTone® Signaling System or universal tone card may be used. The speaker may be used with any compatible 25 or 70Vrms audio system by using the PTCK25 or PTCK70 connector card. The speaker can be indoor or outdoor mounted. The ASHP is NEMA 3 rated.

Features

- 24 VDC polarized operation. 120 VAC model available.
- UL sound pressure level (see chart).
- Multiple tone capability (w/PowerTone® System & PTCK).
- Wide selection of tones



- Voice capable with PTCK audio interface card.
- Die-cast aluminum circuitry housing.
- Internal gain control.
- NEMA 3 rated enclosure.
- Indoor and outdoor mounting.

Optional

- V1971 sync/non-sync strobe lights available in 15/75, 30/75, 75, and 110 candela models. ADA compliant.
- Independent or simultaneous strobe operation.

Ordering Information

Model Number	Part Number	Description
ASHP-24SMR	ASHP-24SMR	Amplified Speaker, 24VDC or 25/70VRMS, Red
ASHP-ACSMR	ASHP-ACSMR	Amplified Speaker, 120VAC, Red
ASHPD24SMR	ASHPD24SMR	Amplified Speaker/Strobe, High Power, 15/75Cd Sync/NS, 24VDC, Red, W-Proof
ASHPJ24SMR	ASHPJ24SMR	Amplified Speaker/Strobe, High Power, 30/75Cd Sync/NS, 24VDC, Red, W-Proof
ASHPM24SMR	ASHPM24SMR	Amplified Speaker/Strobe, High Power, 75Cd Sync/NS, 24VDC, Red, W-Proof
ASHPW24SMR	ASHPW24SMR	Amplified Speaker/Strobe, High Power, 110Cd Sync/NS, 24VDC, Red, W-Proof
PT25W24	PT25W24	PowerTone System
		C/O: PowerTone Module (PTBD)
		Alarm Indicating Mini-Module, 2 circuit (5130 107)
		Plate Kit w/ insulator and hardware (PTPLATE)
PTBD	PTBD	PowerTone Module
U-TC	U-TC	Universal Tone Card - Field Selectable to Desired Tone
PTCK25	PTCK25	25Vrms Connector Card - connects amplified spkrs to 25Vrms audio sys.
PTCK70	PTCK70	70Vrms Connector Card - connects amplified spkrs to 70Vrms audio sys.
ULFB2	ULFB2	UL Listed box (11" x 15" x 4")



ASHP

PowerTone Amplified Speaker

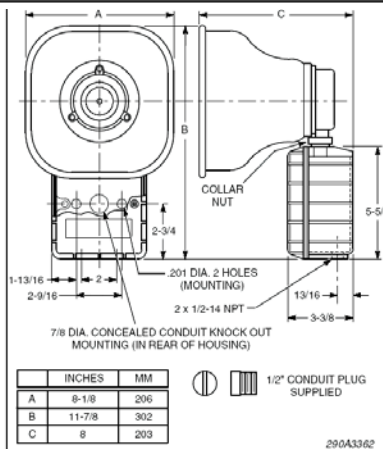
Specifications

Alarm notification appliances shall be amplified speakers using solid-state circuitry. The speakers shall operate at 24 VDC or 120 VAC. The amplified speaker circuitry shall be housed in a die-cast, dust and moisture proof aluminum housing which is NEMA 3 rated. The speaker cone and projector shall be of spun aluminum. The entire unit shall have a red finish. The amplified speakers shall be capable of clearly reproducing any number of HSI tones. The tones shall be selectable by connection to a PowerTone® Signaling System using a PTCK25 connector card (for single or multiple tones) or a plug-in universal tone card for a select tone. The amplified speakers shall be compatible with any 25 or 70Vrms audio system using the PTCK25 or PTCK 70 connector card. The amplified speakers shall have an internal gain control for tone output adjustment. The amplified speakers shall be capable of indoor or outdoor mounting. The speakers shall be UL Listed for fire alarm signaling use. Alarm notification appliances shall be CPG Signals Model ASHP PowerTone® amplified speakers.

(OPTIONAL) The Visalert strobe lights shall be mounted to the front of the amplified speaker circuitry housing. The strobe lights shall use a xenon flashtube with solid state, polarized circuitry operating at 24 VDC. The strobe lights shall comply with the UL 1971 Standard for Signaling Devices for the Hearing Impaired and ADA. The strobe lights shall be UL Rated for a light intensity output of 15/75, 30/75, 75, or 110 candela with a 1Hz flash rate. The strobe lights shall be synchronized when used with VSYNC synchronization module. The strobe lights shall have red FIRE lettering and be listed for outdoor use. The strobe lights may be operated independently or simultaneously with the audible. Audible/strobes shall be CPG Model ASHP with Model V1971 strobe lights.

Tone Card Sound (Model UTC)			Audible Frequency (Hz)	Repetition rate (cycles/min)	Audibility	
Selection	Name	Description			dB(A) Sound Power	UL dB(A) Sound Pressure
TM1	Wail	Conventional siren	550-1250	11	118.1	97.5
TM2	Yelp	Rapid siren	550-1250	3.3 Hz	118.0	97.4
TM3	Hi-Lo	Alternating high and low	560 and 760	50	116.9	96.3
TM4	Bell	Bell, struck repeatedly	800	50	115.8	95.2
TM5	Yeow	Descending high to low, repeated	1300 and 550	36	118.0	97.4
TM6	Horn	Steady horn	470	Continuous	112.2	91.6
TM7	Beep	Slow intermittent horn	470	50	110.8	90.2
TM8	Slutter	Rapid intermittent horn	470	5	110.3	89.7
TM9	Slow Whoop	Slow ascending, low to high - repeated	420 and 1160	15	116.1	95.5
TM10	Temporal Slow Whoop	NFPA coded slow whoop (fire alarm use only)	420 and 1160	15	113.9	93.3

Connector card model	Rated voltage			
PTCK25	25 VRMS		108.7	94.4
PTCK70	70 VRMS		109.0	94.1



NOTICE: The information contained in this document is intended only as a summary and is subject to change without notice. The devices described in this document have specific instruction sheets which cover various technical, limitation and liability information. Copies of these instruction sheets and the General Product Warning and Limitations Document, which also contains important information are provided with the product and are available from Harrington Signal Inc. Fire Alarm. Information contained in these documents should be consulted before specifying or using the product. For further information or assistance concerning particular problems contact Harrington Signal Inc. Harrington Signal Inc. Fire Alarm reserves the right to change specifications without notice.