

PowerTone® Speakers & Speaker/Strobes

Model SPL Low Profile

DESCRIPTION

PowerTone® Model SPL Low Profile Series speakers are designed to reproduce electronically generated warning tones and full range voice communication. The speakers are designed for 25 and 70 volt UL Listed audio systems. Unlike conventional fire alarm speakers, Model SPL Low Profile speakers can be mounted in a standard depth, 4" square back box with no extension ring. Wattage can be adjusted to 1/4, 1/2, 1, and 2 watts by simply moving a clip to the desired tap setting. The SPL speaker is designed for connection to system supervised alarm notification circuits. An optional auxiliary terminal is available. CPG Model V1971 synchronized strobe lights are available as an option when visual signaling is required. Strobes can be synchronized using Model VSYNC sync module.

APPLICATION

The PowerTone Low Profile Series speakers produce a broad frequency range which provides both the low and hi-fidelity response required for effective tone and voice alarm notification. Available mounting options include 7-3/16" diameter round or 5-3/4" square vinyl clad metal plate grills and also a patented, folded 4-1/2" square re-entrant housing which are available in red or white. Re-entrant models may be flush mounted using CPG FBL backbox or surface mounted on a standard four inch backbox. Plated models require a standard four inch backbox for mounting. For complete mounting information see instructions (#2561121).

Model SPL speakers carry the following listings/approvals:

<u>Agency</u>	<u>Reference Number</u>
Underwriter's Laboratories	S6476
California State Fire Marshal	7320-1517:103

STANDARD FEATURES

- Mounts to standard 4" back box with no extension ring.
- Models for 25Vrms or 70Vrms signal lines.
- Taps @ 1/4, 1/2, 1, 2 watts.
- Tap setting selected by movable tap clip.
- Wide frequency response, 400 - 4000Hz.
- Supervisory capacitor.
- Screw terminals for field wiring connections.
- Wire strain reliefs provided for in/out wiring.
- Round or square vinyl clad metal plate grill, red or white.
- Vandal-resistant re-entrant housing, red or white.

OPTIONAL FEATURES

- V1971 sync/non-sync strobe lights available in 15/75, 30/75, 75, and 110 candela models. ADA compliant.
- Trim plates and flush box for Re-entrant model.
- Auxiliary terminal.
- Surface mount box available for square plate models.

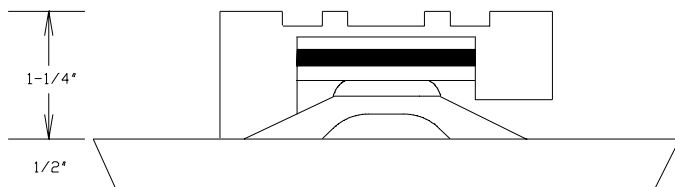


MODEL SPL
PowerTone Low Profile Series Speakers

SPECIFICATIONS

Alarm notification appliances shall be speakers capable of reproducing alarm tones or voice on all 25Vrms or 70Vrms audio systems. Speakers shall provide incremental tap settings of 1/4, 1/2, 1, and 2 watts. Tap settings shall be adjustable by the use of a movable tap clip. The speaker shall be capable of being mounted to a standard 4 inch square back box with no extension ring. Wire strain reliefs shall be provided for in/out wiring. The speaker shall produce a UL Sound Pressure Level at 10 feet up to 87dB(A) at a 2 watt tap. The speaker shall be UL Listed for fire alarm signaling use. Alarm notification appliances shall be Commercial Products Group PowerTone Model SPL Low Profile Speakers.

(OPTIONAL) When visual signaling is required, speaker shall allow for a surface mounted strobe. The strobe light shall operate at 24VDC using filtered or FWR DC power and shall comply with the UL 1971 Standard for Signaling Devices for the Hearing Impaired and ADA. The strobe lights shall be UL Rated for a light intensity output of 15/75, 30/75, 75, or 110 candela with a 1Hz flash rate. The strobe lights shall be synchronized when used with VSYNC synchronization module. Visual signal strobe shall allow for FIRE marking in the vertical position for wall orientation. Speakers and optional strobes shall be UL Listed for fire alarm signaling use. Speaker/strobes shall be CPG Model SPL Low Profile Series with Model V1971 strobe lights.



Unique low-profile backplane allows Model SPL Speaker to mount to standard 4" square backbox with no extension ring.

ORDERING INFORMATION

Part Number	Description	Part Number	Description
LOW PROFILE SPEAKERS SPLF-25RHR 25V, Re-entrant Housing, Red SPLF-70RHR 70V, Re-entrant Housing, Red SPLF-25RHW 25V, Re-entrant Housing, White SPLF-70RHW 70V, Re-entrant Housing, White SPLF-25PRW 25V, Plate Round, White SPLF-70PRW 70V, Plate Round, White SPLF-25PRR 25V, Plate Round, Red SPLF-70PRR 70V, Plate Round, Red SPLF-25PSR 25V, Plate Square, Red SPLF-70PSR 70V, Plate Square, Red SPLF-25PSW 25V, Plate Square, White SPLF-70PSW 70V, Plate Square, White LOW PROFILE SPEAKER/STROBES UL 1971 Listed Strobes - 15/75 Candela, 1Hz (D) SPLFD25RHR 25V, Re-entrant housing, 15/75Cd Sync, 1Hz, Red SPLFD70RHR 70V, Re-entrant housing, 15/75Cd Sync, 1Hz, Red SPLFD25RHW 25V, Re-entrant housing, 15/75Cd Sync, 1Hz, White SPLFD70RHW 70V, Re-entrant housing, 15/75Cd Sync, 1Hz, White SPLFD25PRW 25V, Plate Round, 15/75Cd Sync, 1Hz, White SPLFD70PRW 70V, Plate Round, 15/75Cd Sync, 1Hz, White SPLFD25PRR 25V, Plate Round, 15/75Cd Sync, 1Hz, Red SPLFD70PRR 70V, Plate Round, 15/75Cd Sync, 1Hz, Red SPLFD25PSR 25V, Plate Square, 15/75Cd Sync, 1Hz, Red SPLFD70PSR 70V, Plate Square, 15/75Cd Sync, 1Hz, Red SPLFD25PSW 25V, Plate Square, 15/75Cd Sync, 1Hz, White SPLFD70PSW 70V, Plate Square, 15/75Cd Sync, 1Hz, White UL 1971 Listed Strobes - 30/75 Candela, 1Hz (J) SPLFJ25RHR 25V, Re-entrant housing, 30/75Cd Sync, 1Hz, Red SPLFJ70RHR 70V, Re-entrant housing, 30/75Cd Sync, 1Hz, Red SPLFJ25RHW 25V, Re-entrant housing, 30/75Cd Sync, 1Hz, White SPLFJ70RHW 70V, Re-entrant housing, 30/75Cd Sync, 1Hz, White SPLFJ25PRW 25V, Plate Round, 30/75Cd Sync, 1Hz, White SPLFJ70PRW 70V, Plate Round, 30/75Cd Sync, 1Hz, White SPLFJ25PRR 25V, Plate Round, 30/75Cd Sync, 1Hz, Red SPLFJ70PRR 70V, Plate Round, 30/75Cd Sync, 1Hz, Red SPLFJ25PSR 25V, Plate Square, 30/75Cd Sync, 1Hz, Red SPLFJ70PSR 70V, Plate Square, 30/75Cd Sync, 1Hz, Red SPLFJ25PSW 25V, Plate Square, 30/75Cd Sync, 1Hz, White SPLFJ70PSW 70V, Plate Square, 30/75Cd Sync, 1Hz, White		LOW PROFILE SPEAKER/STROBES UL 1971 Listed Strobes - 75 Candela, 1Hz (M) SPLFM25RHR 25V, Re-entrant housing, 75Cd Sync, 1Hz, Red SPLFM70RHR 70V, Re-entrant housing, 75Cd Sync, 1Hz, Red SPLFM25RHW 25V, Re-entrant housing, 75Cd Sync, 1Hz, White SPLFM70RHW 70V, Re-entrant housing, 75Cd Sync, 1Hz, White SPLFM25PRW 25V, Plate Round, 75Cd Sync, 1Hz, White SPLFM70PRW 70V, Plate Round, 75Cd Sync, 1Hz, White SPLFM25PRR 25V, Plate Round, 75Cd Sync, 1Hz, Red SPLFM70PRR 70V, Plate Round, 75Cd Sync, 1Hz, Red SPLFM25PSR 25V, Plate Square, 75Cd Sync, 1Hz, Red SPLFM70PSR 70V, Plate Square, 75Cd Sync, 1Hz, Red SPLFM25PSW 25V, Plate Square, 75Cd Sync, 1Hz, White SPLFM70PSW 70V, Plate Square, 75Cd Sync, 1Hz, White UL 1971 Listed Strobes - 110 Candela, 1Hz (W) SPLFW25RHR 25V, Re-entrant housing, 110Cd Sync, 1Hz, Red SPLFW70RHR 70V, Re-entrant housing, 110Cd Sync, 1Hz, Red SPLFW25RHW 25V, Re-entrant housing, 110Cd Sync, 1Hz, White SPLFW70RHW 70V, Re-entrant housing, 110Cd Sync, 1Hz, White SPLFW25PRW 25V, Plate Round, 110Cd Sync, 1Hz, White SPLFW70PRW 70V, Plate Round, 110Cd Sync, 1Hz, White SPLFW25PRR 25V, Plate Round, 110Cd Sync, 1Hz, Red SPLFW70PRR 70V, Plate Round, 110Cd Sync, 1Hz, Red SPLFW25PSR 25V, Plate Square, 110Cd Sync, 1Hz, Red SPLFW70PSR 70V, Plate Square, 110Cd Sync, 1Hz, Red SPLFW25PSW 25V, Plate Square, 110Cd Sync, 1Hz, White SPLFW70PSW 70V, Plate Square, 110Cd Sync, 1Hz, White Mounting Accessories NBR Standard 4" Square, 1-1/2"D, Back Box, Red NBLR Deep 4" Square, 2-1/4"D, Back Box, Red SSBR Surface Mount Box for Square Plate Speaker, Red FBL Wall Box for Flush Mntg Re-entrant Spkr., 3-5/8" Deep FGR Flush Mount Grill, Cross Hatch, for Re-entrant Speaker TPSF Trimplate, Semi-flush or Flush Mntg Re-entrant Speaker Strobe Sync Module VSYNC-M Master Sync Module, 2 Class "B" Ckt, 1 Class "A", 3A	

Model SPL Low Profile Speaker Specifications

Speaker Type	UL dB(A) Sound Pressure Level				dB(A) Sound Power (actual)				Strobe Specifications			
	Wattage Tap	1/4 W	1/2 W	1 W	2 W	1/4W	1/2W	1W	2W	Input Voltage	Current @ 24VDC	UL Rated Candela ¹
Plate (No Strobe)	78	81	84	87	92.6	95.6	98.6	101.6	n/a	n/a	n/a	n/a
Plate/Strobe, "D" type	78	81	84	87	92.6	95.6	98.6	101.6	16-33VDC	0.072A	15/75	1Hz
Plate/Strobe, "J" type	78	81	84	87	92.6	95.6	98.6	101.6	16-33VDC	0.090A	30/75	1Hz
Plate/Strobe, "M" type	78	81	84	87	92.6	95.6	98.6	101.6	16-33VDC	0.160A	75	1Hz
Plate/Strobe, "W" type	78	81	84	87	92.6	95.6	98.6	101.6	16-33VDC	0.193A	110	1Hz
Re-entrant (No Strobe)	78	81	84	87	92.6	95.6	98.6	101.6	n/a	n/a	n/a	n/a
Re-entrant/Strobe, "D" type	78	81	84	87	92.6	95.6	98.6	101.6	16-33VDC	0.072A	15/75	1Hz
Re-entrant/Strobe, "J" type	78	81	84	87	92.6	95.6	98.6	101.6	16-33VDC	0.090A	30/75	1Hz
Re-entrant/Strobe, "M" type	78	81	84	87	92.6	95.6	98.6	101.6	16-33VDC	0.160A	75	1Hz
Re-entrant/Strobe, "W" type	78	81	84	87	92.6	95.6	98.6	101.6	16-33VDC	0.193A	110	1Hz

NOTE: 1. All models ADA compliant.



FL-SPL-SY (09/02)

COMMERCIAL PRODUCTS GROUP
 TM FIRELARM, © PowerTone
 © COMMERCIAL PRODUCTS GROUP, 2002
 PRODUCT SPECIFICATIONS ARE
 SUBJECT TO CHANGE WITHOUT NOTICE



2519 4th Avenue
 Moline, IL 61265
 800-521-8219 • FAX 800-225-4109
 www.cpglifesafety.com