



SPHP

Speaker / Speaker Strobes

CPG Signals
 2519 4th Avenue, Moline, Illinois 61265
 P.O. Box 590, Moline, Illinois 61266-0590
 Phone: (800) 577-5758 Local: (309) 762-0731 Fax: (309) 762-8215

MEA



ISO 9001 Certified Management System

Description

CPG Signals Model SPHP PowerTone® High Output Speaker produces a crisp, clear, high-decibel tone/voice output. Tones may be generated by the PowerTone® Signaling System or any 25Vrms or 70Vrms tone/voice audio system. The speaker cone and projector are of spun aluminum. The speaker circuitry is contained in dust and moisture proof sealed housing of die-cast aluminum. The speaker has a supervisory Dc coupling capacitor and wattage taps from 0.5 to 15 watts. The speaker is NEMA 3 rated, and is finished in red enamel. The PowerTone® speaker is designed for connection to system supervised alarm notification circuits.

HSI model V1971 synchronized strobe lights are available as an option when visual signaling is required. Strobes can be synchronized using Model VSYNC sync module. Both the speaker and strobe are listed for indoor and outdoor use.

Features

- Operates on 25Vrms or 70Vrms signal lines.
- Multiple power taps @ 0.5, 1, 2, 7, and 15 watts.
- High dB output for coverage of large areas.
- UL sound pressure level 102dB(A) at 10 feet, (see chart).
- Built-in 15 watt high efficiency compression driver.
- Die-cast aluminum circuitry housing.
- Wide frequency response, 400-4000Hz.
- Supervisory capacitor.
- NEMA 3 rated enclosure.
- Indoor and outdoor mounting.
- V1971 sync/non-sync strobe lights available in 15/75, 30/75, 75, and 110 candela models. ADA compliant.
- Independent or simultaneous strobe operation.



Ordering Information

Model Number	Part Number	Description
SPHP-DVSMR	SPHP-DVSMR	High Output Speaker, Surface Mount, 25 VRMS or 70 VRMS, Red.
SPHPDDVSMR	SPHPDDVSMR	High Output Speaker/Strobe, Surface Mount, 25 VRMS or 70 VRMS, Red. Strobe: 15/75cd Sync/Non-Sync, 1 Hz, 24 VDC.
SPHPJDVSMR	SPHPJDVSMR	High Output Speaker/Strobe, Surface Mount, 25 VRMS or 70 VRMS, Red. Strobe: 30/75cd Sync/Non-Sync, 1 Hz, 24 VDC.
SPHPMDVSMR	SPHPMDVSMR	High Output Speaker/Strobe, Surface Mount, 25 VRMS or 70 VRMS, Red. Strobe: 75cd Sync/Non-Sync, 1 Hz, 24 VDC.
SPHPWDVSMR	SPHPWDVSMR	High Output Speaker/Strobe, Surface Mount, 25 VRMS or 70 VRMS, Red. Strobe: 110cd Sync/Non-Sync, 1 Hz, 24 VDC.
VSYNC-M	VSYNC-M	Master Sync Module, 2 Class "B" Ckt, 1 Class "A", 3A
PT25W24	PT25W24	PowerTone System



SPHP

Speaker / Speaker Strobes

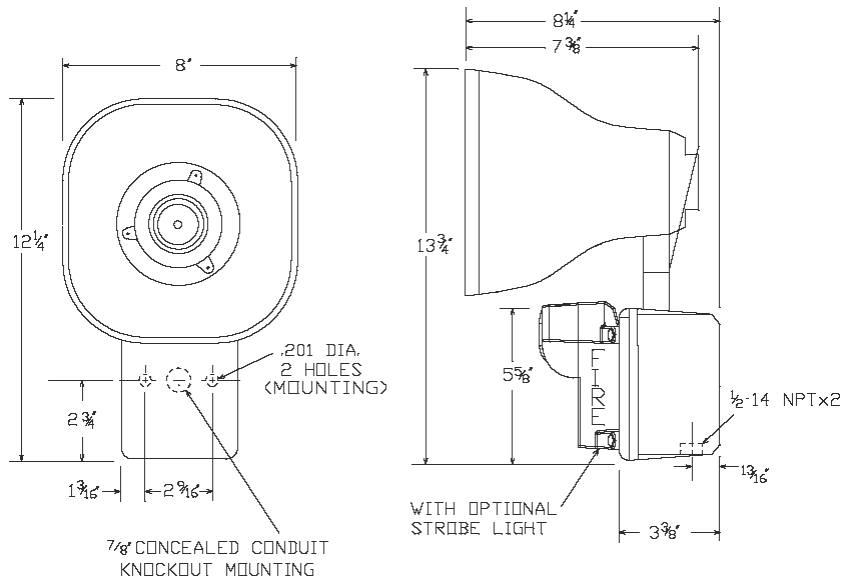
Specifications

Alarm notification appliances shall be speakers using solid-state circuitry. The speaker circuitry shall include a supervisory capacitor and shall be housed in a die-cast, dust and moisture proof aluminum housing which is NEMA 3 rated. The speaker cone and projector shall be of spun aluminum. The entire unit shall have a red finish. The speaker shall be capable of clearly reproducing alarm tones or voice on all 25Vrms or 70Vrms audio system. The speaker shall provide incremental wattage tap settings of 0.5, 1, 2, 7 and 15 watts. The speaker shall be capable of indoor or outdoor mounting. The speaker shall be capable of a UL sound pressure level at 10 feet of 102dB(A).

The speakers shall be UL Listed for fire alarm signaling use. Alarm notification appliances shall be Harrington Signal Inc Model SPHP PowerTone® speakers. (OPTIONAL) The Visalert strobe lights shall be mounted to the front of the high output speaker circuitry housing. The strobe lights shall use a xenon flashtube with solid state, polarized circuitry operating at 24 VDC. The strobe lights shall comply with the UL 1971 Standard for Signaling Devices for the Hearing Impaired and ADA. The strobe lights shall be UL Rated for a light intensity output of 15/75, 30/75, 75, or 110 candela with a 1 Hz flash rate. The strobe lights shall be synchronized when used with VSYNC synchronization module.

The strobe lights shall have red FIRE lettering and be listed for outdoor use. The strobe lights may be operated independently or simultaneously with the audible. Audible/strobes shall be HSI Model SPHP with Model V1971 strobe lights.

The PowerTone® Speaker is well suited for signaling in areas with high ambient noise levels and where a high efficiency, weatherproof and corrosion-resistant surface mount speaker is required. The speaker may be used with any 25Vrms or 70Vrms audio system. The speaker and speaker/strobe can be indoor or outdoor mounted. The SPHP is NEMA 3 rated.



NOTICE: The information contained in this document is intended only as a summary and is subject to change without notice. The devices described in this document have specific instruction sheets which cover various technical, limitation and liability information. Copies of these instruction sheets and the General Product Warning and Limitations Document, which also contains important information are provided with the product and are available from Harrington Signal Inc. Fire Alarm. Information contained in these documents should be consulted before specifying or using the product. For further information or assistance concerning particular problems contact Harrington Signal Inc. Harrington Signal Inc. Fire Alarm reserves the right to change specifications without notice.