

# MPEX

## EXPLOSION-PROOF PULLSTATION

### SAFETY MESSAGE TO INSTALLERS

People's lives depend on your safe installation of our products. It is important to read, understand and follow all instructions shipped with this product. In addition, listed below are some other important safety instructions and precautions you should follow:

- This unit should be installed by a qualified electrician in accordance with NFPA 72, and national and local Electrical and Fire Codes, under the direction of the authority having jurisdiction.
- If the unit is not installed in a supervisory system, it must be tested at regular intervals. Refer to NFPA 72 (Chapter 7) and the local Fire Codes for this information.
- After installation and testing are complete, provide a copy of this instruction sheet to all personnel responsible for routine testing and maintenance of this equipment.
- After installation, ensure that all threaded joints are tightened.

Failure to follow all safety precautions and instructions may result in property damage, serious injury, or death to you or others.

### A. GENERAL.

Model MPEX explosion-proof pull stations are rated at 120VAC, 60Hz, with a rating of 6-amperes continuous. The units are Underwriters Laboratories Listed. The units are also NEMA 7CD, 9EFG rated for: Class I, Div. 1 and 2, Group C and D; Class II, Div. 1 and 2, Group E, F, and G; and Class III hazardous locations.

The stations are activated by lifting the front cover and pulling the ring down. The station is reset by depressing the shaft and returning the plate to its original position.

The enclosure is constructed of a cast, copper-free, aluminum alloy with a 3/4" threaded conduit entrance on both the top and bottom.

### B. INSTALLATION.

#### 1. Unpacking.

After unpacking the pull station, examine it for damage that may have occurred in transit. If the unit has been damaged, do not attempt to install or operate it. File a claim immediately with the carrier stating the extent of the damage.

#### 2. Mounting.

Securely attach the splice box to a rigid surface using 1/4" diameter mounting bolts. Attach 3/4" conduit to the splice box. Pull the wires through the conduit and into the splice box.

#### 3. Electrical Connections.

### DANGER

*You may be seriously injured or killed if you touch live wires. To avoid electrical shock, do not attempt to connect wires when power is on.*

### WARNING

*Property damage, serious injury, or death in the protected premises may occur if wiring is improperly terminated. For proper warning system operation, ensure that the wires to the pull stations are properly terminated.*

National Electrical Code as well as local codes must be adhered to in the installation of this device. If only one 3/4" conduit entryway is used, the other must be plugged for operation. All electrical wiring must be routed through conduit and fittings approved for explosion-proof installations.

### WARNING

*Property damage, serious injury, or death may result if an uninsulated section of a field wiring lead is looped around any of the field wiring terminals. The installer must break the supply wire run to allow supervision of the electrical connections (per NFPA 72).*

### NOTE

*Connect only #12 through #24 AWG insulated copper wire to this pull station.*

- Strip approximately 1/4" of insulation from the end of each wire.
- For normally open circuits, insert each set of wires into terminal positions 1 and 2. For normally closed circuits, insert each set of wires into terminal positions 3 and 4.
- Connect the ground wire to the ground screw in the splice box.
- Tighten the terminal screws to secure the wires in place.
- To complete the installation, install the cover assembly. Tighten the four cover bolts so a 0.0015" feeler gauge will not enter the flange joint by more than 1/8" at any point.

### C. TEST/OPERATING.

- After completion of installation, be sure to test the system to verify that each pull station operates satisfactorily, along with the device it is attached to.
- After completion of initial system test, a program for periodic testing of this device should be established. Refer to NFPA 72 (Chapter 7), local Fire Codes and the authority having jurisdiction for this information.

3. Provide a copy of these instructions to the Safety Engineer(s), System Operator(s) and maintenance personnel.

**SAFETY MESSAGE TO OPERATORS**

*Although the warning system is operating properly, it may not be completely effective. People may not see or heed your warning signal. You must recognize this fact and ensure that your warning signal achieves its intended effect through proper test/training sequences suitable for your specific application(s).*

**D. MAINTENANCE.**

**SAFETY MESSAGE TO MAINTENANCE PERSONNEL**

Failure to follow all safety precautions and instructions may result in property damage, serious injury, or death to you or others.

- Read and understand all safety precautions and instructions in all sections of this publication before performing maintenance on this unit.
- Do not perform maintenance on this unit when circuits are energized.
- Periodic checks should be made to ensure that effectiveness of this device has not been reduced because objects have been placed in front of the station.
- Any maintenance to this unit **MUST** be performed by a trained electrician in accordance with NEC guidelines and local codes.
- Never alter this unit in any manner. Safety may be jeopardized if alterations are made to this device.
- The nameplate, which contains cautionary or other information of importance to maintenance personnel, should not be obscured by a foreign substance or by objects placed in front of the nameplate.

To prevent corrosion, occasionally apply petrolatum, or a soap-thickened mineral oil, to the box/cover flanges; apply Dow Corning Molykote 33 (light consistency) to the operator shaft.

**E. SERVICE.**

**WARNING**

*Unauthorized repair/servicing of the unit may result in degradation of performance and/or property damage, serious injury, or death to you or others. If a malfunctioning unit is encountered, do not attempt any field repair/retrofit of parts.*

The factory will service your equipment for any problem that cannot be handled locally with satisfaction or promptness.

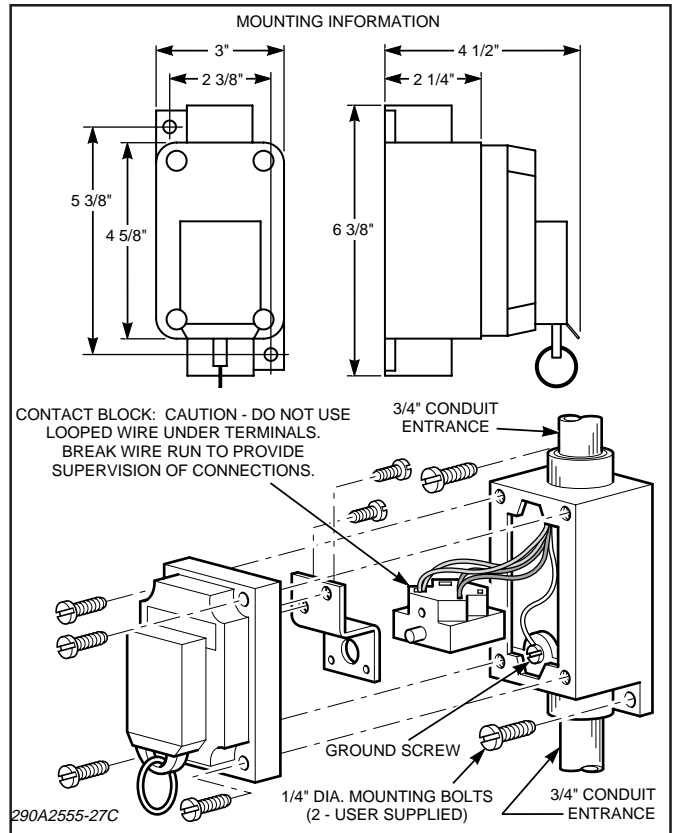


Figure 1. Typical Installation.

If this device is returned to the factory for repair, it can be accepted only if we are notified by mail or phone in advance of its arrival. Such notice should clearly indicate service requested and give all pertinent information regarding the nature of the problem, and if possible, its cause.

Communications, requests for technical information, and shipments should be addressed to:

Technical Service Department  
 Commercial Products Group  
 2519 - 4th Avenue  
 Moline, IL 61265  
 800.521.8219 • FAX 800.225.4109

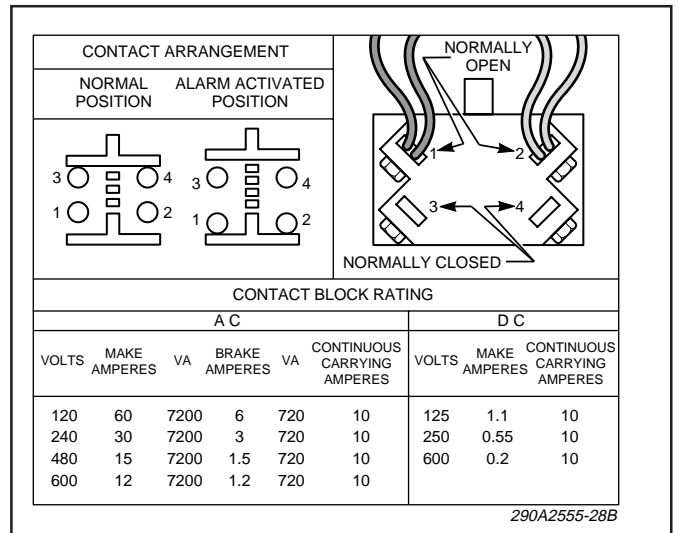


Figure 2. Contact Block Set-up.